

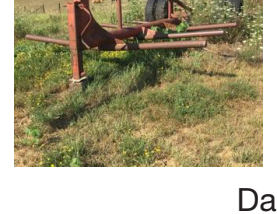
# Retirement Farm Machinery & Livestock Equipment

# PUBLIC AUCTION

## Saturday, Oct. 14, 2017 • 10 A.M.

Located from Creston, IA (east edge at Wellman Dynamics Foundry) 3 1/2 mi E on Hwy 34 (south side of road) items will be lined up in pasture east of home site.

**Not many small items. Please be on time!**



## Farm Miscellaneous, Livestock Equipment

(125) M/L steel T fence posts; (16) 16' wire cattle panels; (2) 14' lowboys; Homelite transfer pump, 100 GPM; (4) large round bale rings; 10' portable loading chute; 500 gal fuel barrel with electric pump; misc. tractor, truck & wagon tires; 8' pickup topper; IH front weight bracket; pair of 18-4-38 tractor chains; HD 3 pt bale carrier; HD cat III quick hitch; pair of fenders for MF WD tractor; 6 ton PAX bulk bin with slide bottom (good); Mid Key 30' sq bale conveyor w/motor; (2) Feed train steel feed bunks 14' like new; (20) cement fence line feed bunks 10'; (4) H style cement feed bunks 8'; (2) Palco portable corrals (27 panels each), each with gate (1 has a load out frame); WW 7x24 GN livestock trailer with 2 divide gates.

## Hay & Forage Equipment

JD #568 LR baler, mega wide plus, netwrap or twine, moisture tester, sq. tooth pickup, 5132 bales; H&S 14 wheel rake (has all teeth); bale carrier & winch for pickup; 6 bale bumper hitch bale carrier; 8 bale GN bale carrier; 8x14 hay rack on gear; 6x12 hay rack & gear; Blair 4x10 feed wagon w/scales.

## Other Farm Machinery

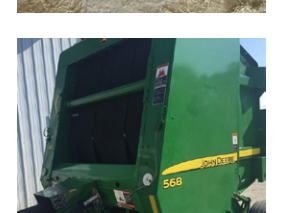
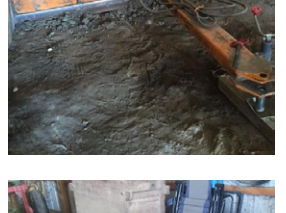
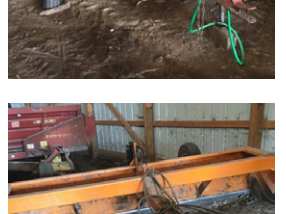
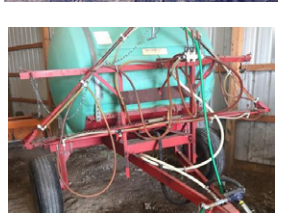
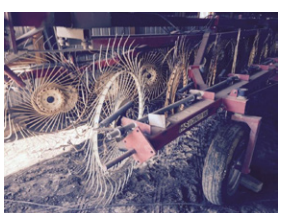
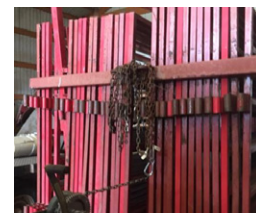
5"x11' truck auger with motor; Parker #325 RWX grain cart with roll tarp; JD #7000 4 row planter; JD MX 110 rotary cutter, 10'; Big Dog 10' box scraper in like new condition; Snyder 500 gal sprayer w/booms & new pump; Danhauser 3pt post hole digger w/9'; 12 & 16" augers; New Holland #790 tandem axle PTO spreader 6x16; 3 pt potato plow; IGON 3 pt 7' rotary tiller; JD #220 20' bi fold disc w/HA; JD 22' field cultivator w/new sweeps & HA; JD RM 4 row 3 pt cultivator; Vermeer V8100 trencher w/6' depth & backhoe w/18" bucket; tile cart hyd or electric over hyd to sell separately.

## Trailers

8' x 20' triple axle gooseneck trailer, steel w/4' beaver tail, spare tire & ramps; Heavy duty 18' + 2' car trailer w/ramps & spare tire.

## Tractors (sell last)

Extra nice JD #7420 diesel tractor, MF WD 5000 hours, has new 520/85R38 rear rubber, power guard plus trans w/JD 741 loader with 8' bucket, SN RW 7420 RO15776; bale spear for above to sell separately; JD #4450 diesel tractor, PS, 2WD, 18-4R42 rear rubber, odometer shows 3650 hours SN RG6436 GT3 40563; JD #7400 diesel tractor, MF WD, open station, 10000 hours, PQ trans, SN 1060 81432 577; JD #4630 diesel tractor, cab, PS, 10000+ hours, SN6404AK-11; Westendorf WL 42 loader with like new 8' bucket, 4630 mts; used 7' bucket; HD bale spear & pallet forks to sell separately; pair of 18-4-38 axle mt duals for 4630.



# Dennis & Pam Richie

641-782-6034 for info.

Auction conducted by:

West & Frey Auctioneers LLC, Creston, Iowa & Creston Livestock Auction Services  
Darwin West 641-344-1958, Tom Frey 641-344-5082; Larry Newman, Clarinda 712-542-2901; Brandon Frey;  
Pete Myers, Steve Bergren 712-789-0847 Sale Clerks: June West, Leisa Frey

Terms: Cash or good check with photo ID if unknown by the auction team. Lunch on grounds by the Little Green Trailer and a portable restroom available.

Auctioneers Note: Most of the major items have been shedded. Come expecting a nice clean offering from start to finish. Sale will not last a long time due to few lowboy items. Please be on time!

[WWW.CRESTONLIVESTOCK.COM](http://WWW.CRESTONLIVESTOCK.COM)